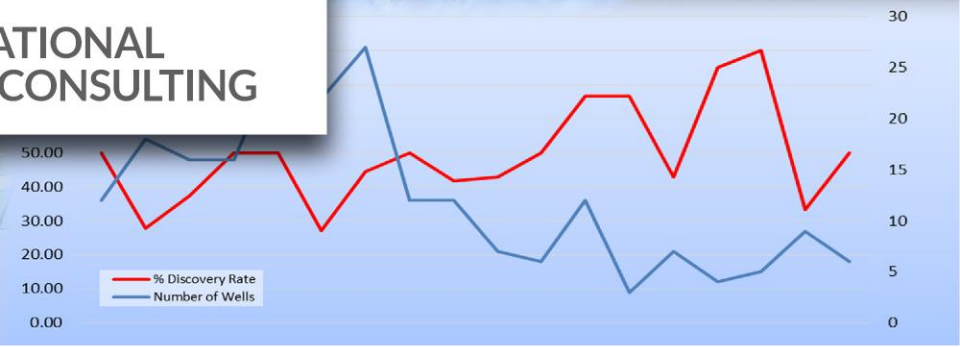
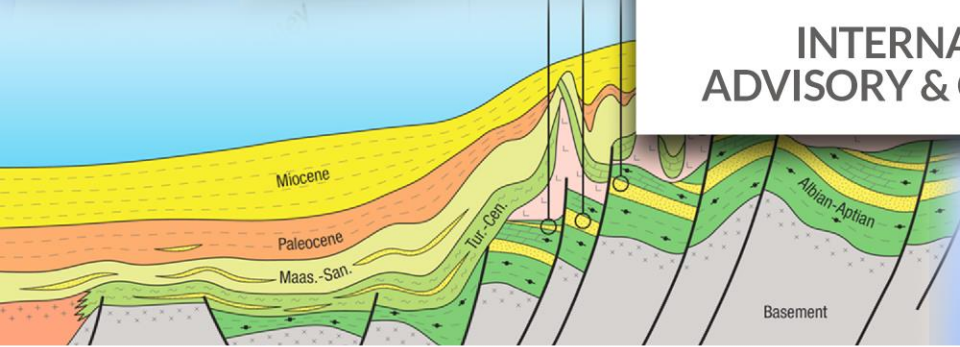


PVE
CONSULTING LTD LONDON
 E&P UPSTREAM BUSINESS DEVELOPMENT

**INTERNATIONAL
 ADVISORY & CONSULTING**



Company Profile 2024



Core staff



- Peter Elliott (Director)
- Duncan Rushworth, Intl BD
- Ian Bulley – Geology & Geophysics
- Madeleine Slatford – Intl BD, G&G
- Lauren Bond
- GIS, geology, IT

Data Rooms Facilities



Central **London**, 17 Hanover Square

Houston Energy Corridor

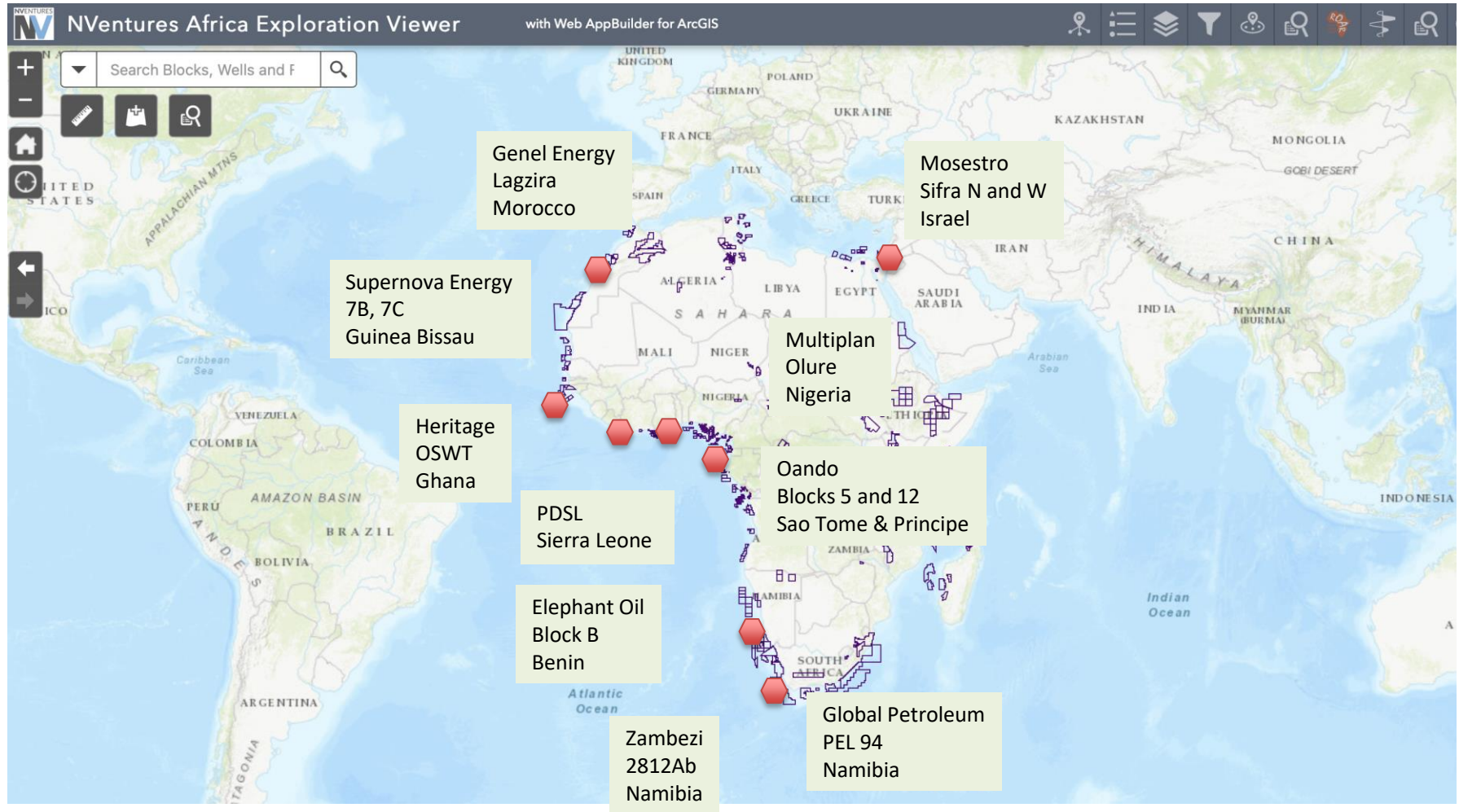
San Felipe Plaza

Remote – AnyDesk or TeamViewer



Execution – Entry and Growth

Current Data Rooms





PVE Data Room Services

PVE Consulting Ltd provides secure, state of the art data room services in central London and Houston.



Data room support for farm out promotion, and A&D and M&A due diligence.



Data room services for government promotion of assets, acreage and bid rounds.

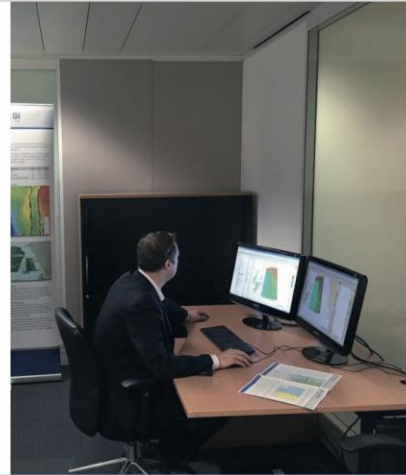
Data Room

- Modern geophysical workstations
- Up to date geophysical software
- GIS and Office software
- Full IT and support staff
- Senior geophysical and geological staff

Bid Rounds, A&D, Farm out

Host your data room with PVE Consulting

- Secure modern facilities
- Confidential environment with full user management and data tracking
- Professional presentation and data room team
- Promote data, assets, bid rounds and farm-in opportunities



For further information please contact:

Lauren Bond
+44 (0)7787 482 133
lauren.bond@pveconsulting.co.uk

London Office:
17 Hanover Square
London W1S 1BN

Houston Office:
San Felipe Plaza
Houston, Texas (5847 San Felipe)

www.pveconsulting.co.uk

Sierra Leone



PETROLEUM DIRECTORATE SIERRA LEONE

**SIERRA LEONE
GEOTECHNICAL
DATA EVALUATION**

DATA ROOM RULES

LONDON DATA ROOM



17 Hanover Square, London, W1S 1BN, United Kingdom

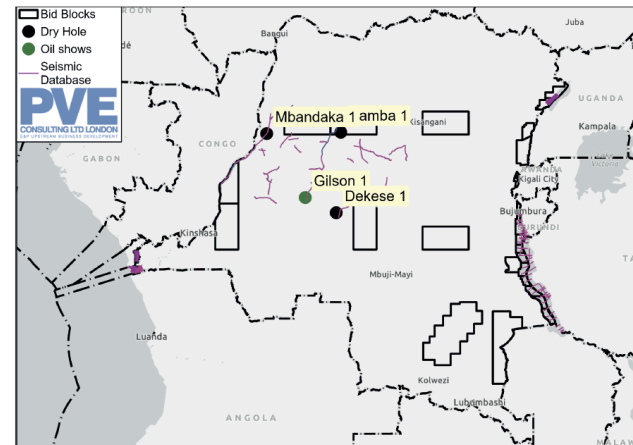
www.pveconsulting.co.uk

PETROLEUM DIRECTORATE SIERRA LEONE
20 Mandalay Street, Kingtom, Freetown Sierra Leone

DRC



Democratic Republic of Congo Well & Seismic Database



Region	Seismic Km	Wells
Cuvette Centrale Basin	2,334	4
Coastal Basin	2,886	-
Lake Tanganyika Basin	1,628	-
Albertine Basin	941	-



For further information contact:
peter.elliott@pveconsulting.co.uk
+44 (0)7971 073 198

WWW.PVECONSULTING.CO.UK

Farm Out Campaigns

Offshore Ghana Early Production Opportunity

Offshore Southwest Tano, Deepwater Tano Basin

Genel Energy

Morocco

Heritage Oil and well, testing a well

- The Offshore Licence has 100,000 net petroleum units TEN and Jubilee
- 2.1 bbls/d across 3 groups and Tarounan and proven in near
- Two drill read identified Man secondary plan and Edman, an exploration opp
- The Matzonia STORIP (P) and Mahogany area 185 mmbls in Mahogany Ultra

Blues Energy

Guinea Bissau Blocks 7B and 7C: Farm-In Opportunity

Elephant Oil

Benin Block

2022 Updates

Namibia PEL

Global Petroleum is seeking partners for its key prospects, M

Operating Group

2022 Updates

- Multi-play strong lead in West
- World class oil discovery
- Discovery through the West
- Oil ready for production
- Large footprint with the
- Well organized and stable
- Excellent fiscal terms (tax)
- Strong, well respected
- 350m to 1,500m water d
- Most recent seismic walk

Adjacent to a Multi-billion Proven ops Modern data

PVE

Block 5 São Tomé and Príncipe

Major Exploration Entry Opportunity Adjacent To Galp-Energia / Shell Jaca-1 Wildcat

GLOBAL PETROLEUM LIMITED

Offshore

Major Opportunity

Onshore Israel

Mosestro Ltd, a private exploration permits the evaluation of seismic suitable partners to su

Operating Group

Nigeria - Oluere Field Investment Opportunity

Mosestro Ltd has been engaged by PVE Consulting Ltd as a major service contractor for the Nigeria oil field offshore the Niger Delta. Oluere represents a proven oil field development opportunity, close to existing infrastructure with offshore agreements in place and a fast track development programme close to approval. Investors and upstream firms can expect a rapid return on investment with very high commodity prices.

Summary

- Medium risk exploration
- Classic and carboniferous
- Sifra North represent
- Sifra West represent
- Sifra North is drill ri
- Comedy proves rem
- Fiscal terms are exc
- Mosestro is a strong
- Onshore oil and gas

Facilities

Name	PPL 216
License	Oil and Gas
Type	3-Tie
Terrain	1000
Wd m	OIL 49
Discovery date	Q1 2021
O&M Operator	GCA, June 2021
OPR	Clure 1, Clure 2, Clure 3
Wells	Clure 1, Clure 2, Clure 3
DEP	20/0/2022
PH, 1 Start Date	2025
PH, 2 Start Date	2025
Programme	Minimum Spend \$25,000,000
Partners	Minimum Spend \$25,000,000 (30%)
Big Bonus Naira	6,800,000,000
Big Bonus USD	16,407,406

Oil STOIP

Low (mmbl) 25.1 Best (mmbl) 61.9 High (mmbl) 97.5

Oil, Gas & Condensate in Place

Oil (mmbl) 63.6 Gas (bcf) 146 Cost (mmbl) 7.8

Database

137 KSP-3D 23 Wells 12 OPR

Operating Group

Subsaharan Atlantic Energy 30% Multicon Nigeria Limited 70% Operating Company Multicon Nigeria Limited

PVE

Mosestro Energy for Israel

Onshore Israel

Mosestro Ltd, a private exploration permits the evaluation of seismic suitable partners to su

Operating Group

Nigeria - Oluere Field Investment Opportunity

Mosestro Ltd has been engaged by PVE Consulting Ltd as a major service contractor for the Nigeria oil field offshore the Niger Delta. Oluere represents a proven oil field development opportunity, close to existing infrastructure with offshore agreements in place and a fast track development programme close to approval. Investors and upstream firms can expect a rapid return on investment with very high commodity prices.

Summary

- Medium risk exploration
- Classic and carboniferous
- Sifra North represent
- Sifra West represent
- Sifra North is drill ri
- Comedy proves rem
- Fiscal terms are exc
- Mosestro is a strong
- Onshore oil and gas

Facilities

Name	PPL 216
License	Oil and Gas
Type	3-Tie
Terrain	1000
Wd m	OIL 49
Discovery date	Q1 2021
O&M Operator	GCA, June 2021
OPR	Clure 1, Clure 2, Clure 3
Wells	Clure 1, Clure 2, Clure 3
DEP	20/0/2022
PH, 1 Start Date	2025
PH, 2 Start Date	2025
Programme	Minimum Spend \$25,000,000
Partners	Minimum Spend \$25,000,000 (30%)
Big Bonus Naira	6,800,000,000
Big Bonus USD	16,407,406

Oil STOIP

Low (mmbl) 25.1 Best (mmbl) 61.9 High (mmbl) 97.5

Oil, Gas & Condensate in Place

Oil (mmbl) 63.6 Gas (bcf) 146 Cost (mmbl) 7.8

Database

137 KSP-3D 23 Wells 12 OPR

Operating Group

Subsaharan Atlantic Energy 30% Multicon Nigeria Limited 70% Operating Company Multicon Nigeria Limited

PVE

Mosestro Energy for Israel

Onshore Israel

Mosestro Ltd, a private exploration permits the evaluation of seismic suitable partners to su

Operating Group

Nigeria - Oluere Field Investment Opportunity

Mosestro Ltd has been engaged by PVE Consulting Ltd as a major service contractor for the Nigeria oil field offshore the Niger Delta. Oluere represents a proven oil field development opportunity, close to existing infrastructure with offshore agreements in place and a fast track development programme close to approval. Investors and upstream firms can expect a rapid return on investment with very high commodity prices.

Summary

- Medium risk exploration
- Classic and carboniferous
- Sifra North represent
- Sifra West represent
- Sifra North is drill ri
- Comedy proves rem
- Fiscal terms are exc
- Mosestro is a strong
- Onshore oil and gas

Facilities

Name	PPL 216
License	Oil and Gas
Type	3-Tie
Terrain	1000
Wd m	OIL 49
Discovery date	Q1 2021
O&M Operator	GCA, June 2021
OPR	Clure 1, Clure 2, Clure 3
Wells	Clure 1, Clure 2, Clure 3
DEP	20/0/2022
PH, 1 Start Date	2025
PH, 2 Start Date	2025
Programme	Minimum Spend \$25,000,000
Partners	Minimum Spend \$25,000,000 (30%)
Big Bonus Naira	6,800,000,000
Big Bonus USD	16,407,406

Oil STOIP

Low (mmbl) 25.1 Best (mmbl) 61.9 High (mmbl) 97.5

Oil, Gas & Condensate in Place

Oil (mmbl) 63.6 Gas (bcf) 146 Cost (mmbl) 7.8

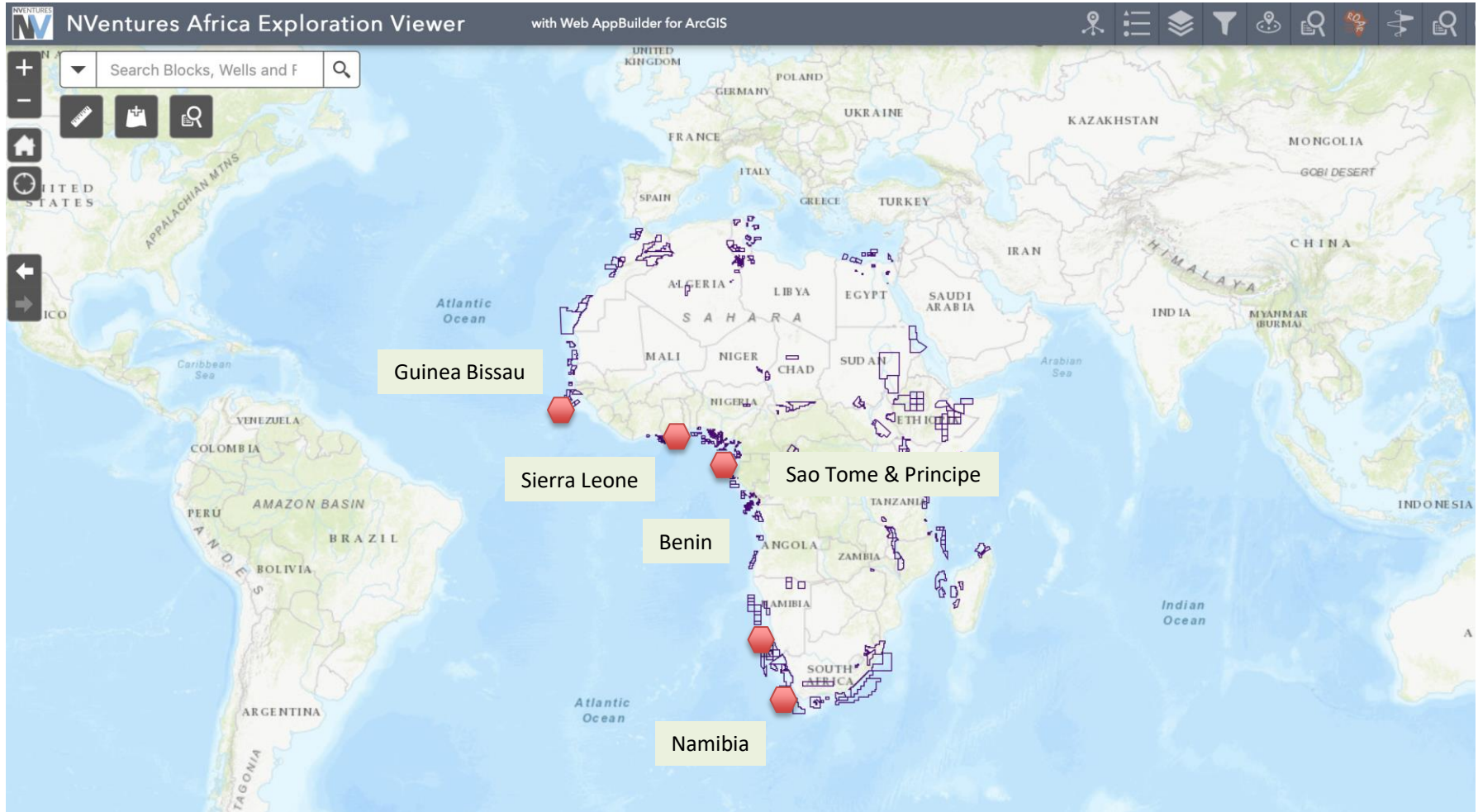
Database

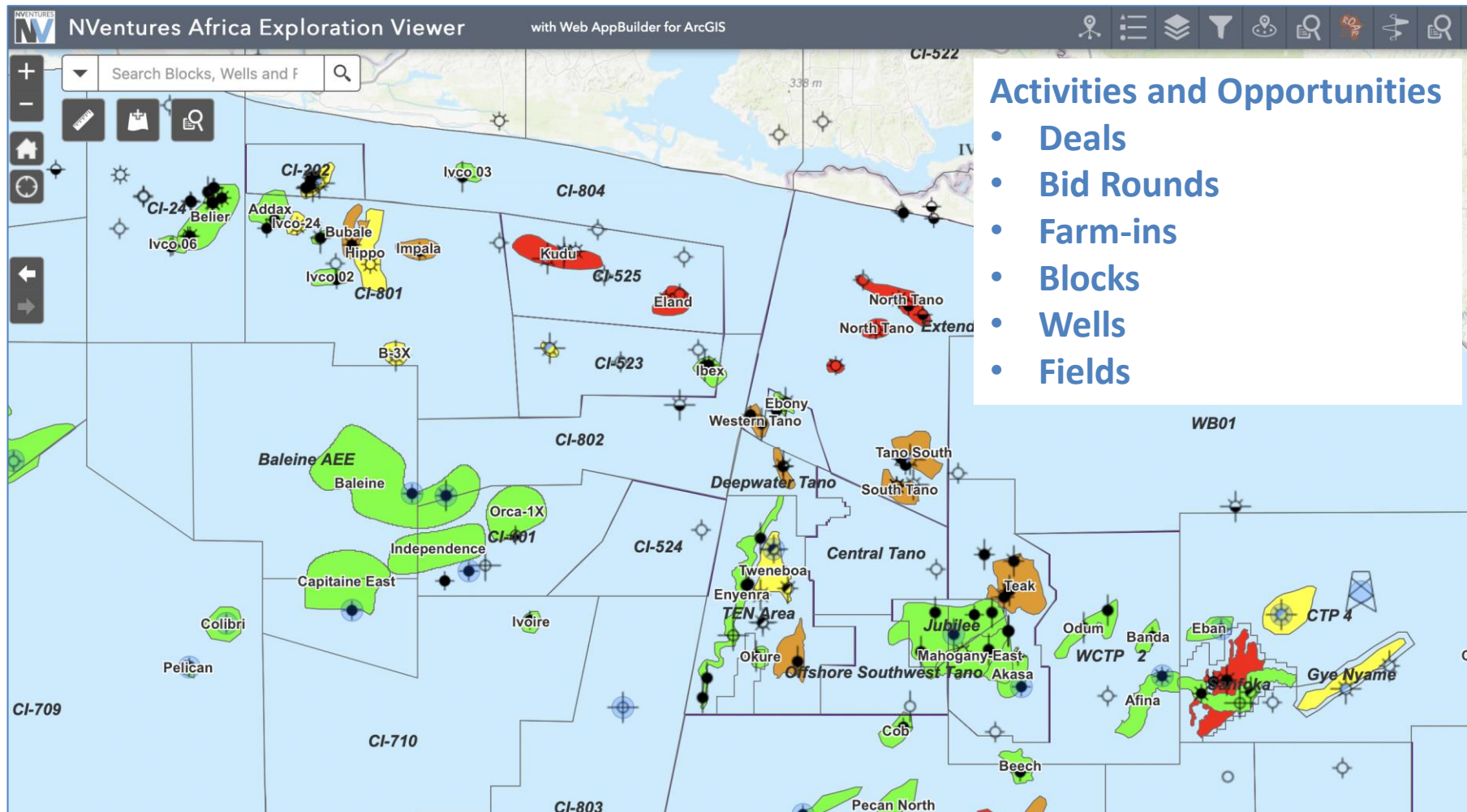
137 KSP-3D 23 Wells 12 OPR

Operating Group

Subsaharan Atlantic Energy 30% Multicon Nigeria Limited 70% Operating Company Multicon Nigeria Limited

PVE





PVE Core Offering:

- International Business Development and A&D
 - Full range of buy-side and sell-side services
 - Extensive network within banks, brokers and energy companies
 - Ability to proactively source “grey” market opportunities
- Screening, identification, reporting
 - Screening facilitated by internal NVentures datasets
- Data Room and asset evaluation

Experienced team

- Peter Elliott – BD, G&G – 30 years Africa experience
- Duncan Rushworth – Intl BD, Economics – 30 years oilco experience
- Africa Energy Partners – Africa bid round and farm-out promotion
- Madeleine Slatford – BD, G&G – Tullow, Cairn, HIS
- Ian Bulley – G&G – Cairn, Tullow, Hardman Resources
- Beagle Geoscience – 35 years Africa exploration
- NVentures analyst team

- **Elephant Oil Limited (Director)**
 - Award of acreage onshore Namibia adjacent to ReconAfrica
- **Prospex Energy [PXEN] (BD Manager)**
 - Farm in to **Suceava** Block, Romania
 - Farm out wells – Baint 1 and 2
 - Sale of Suceava to H2Oil
- **Elephant Oil (Director)**
 - Option farm out to United Oil and Gas, **Block B** Benin
 - Farm out obligation – Passive seismic
 - Licence Award – West Africa
- **Supernova Energy (Senior Advisor)**
 - Full exploration and licence management, 7B and 7C Guinea Bissau, farm-out campaign
- **Oando / Equator Exploration (Advisor)**
 - Farm out Sao Tome **Blocks 5 and 12** to Kosmos Energy - Farm out obligation. – 3D and 1 well
 - Licence award – Croatia Block **Drava 03**
- **Trace Atlantic**
 - Farm out **Djiffere** Senegal to FAR
 - Farm out obligation – 3D
 - Farm out campaign Block 1 G Bissau
- **FAR**
 - Data Room support, London
- **Black Star Petroleum**
 - Licence award of **Block 4B** Guinea Bissau and **2913B** Namibia (Venus)
 - Company sale to **Impact** Oil and Gas
- **Prontinal**
 - Farm out **Block 4B** Sierra Leone to Talisman
 - Farm out well – Djembe 1
- **Rocksource**
 - Farm in to **AGC Profund** with Ophir
 - Farm in well – Kora 1
- **Oranto**
 - Farm out **Block H** Equatorial Guinea to ROC Oil
 - Farm out obligation – 3D

Current and Recent Mandates



Prospect Oil & Gas
Advisory, Business
Development
Exploration campaign
support



Oando
Advisory, Business
Development and
farm out mandates



Heritage Oil
OSWT Ghana Farm-
out



Supernova Energy
Farm out, Block 7B
Guinea Bissau



Elephant Oil
Advisory, Business
Development
Exploration campaign
support



Blue Star Exploration
Farm out,
OSWT Ghana



Genel Energy
Lagzira, Morocco
Farm-out



Delonex Energy
Farm out,
Blk 12A, Kenya

Contacts

LONDON

Peter ELLIOTT

Mobile. +44 (0)7971 073 198

peter.elliott@pveconsulting.co.uk

LONDON

Lauren BOND

Mobile. +44 (0)7787 482 133

Lauren.bond@pveconsulting.co.uk

17 Hanover Square,
London, W1S 1BN, UK

www.PVEConsulting.co.uk